

## Datasheet

### Care Transponder 2.15

#### V410-103(-008) as a pendant with clip



### General description

The care transponder performs the following tasks:

1. If a care transponder and a dementia transponder are located together in an LF detection field / LF detection field, the alarm to be triggered by the dementia transponder is suppressed by the nursing transponder.
  2. Depending on the setting of the receiving unit (HF), the button of the nursing transponder in the detection field / locating field serves for alarm acknowledgment.
  3. In addition, the field size can be checked with the care transponder. As soon as the care transponder is in the field, the LED on the transponder flashes red in the rhythm of 1.2 seconds.
- Additional functions of the transponder in connection with the software SCC 5.0:

1. A nurse call can be triggered with the nurse transponder.
2. With the care transponder the triggered emergency call can be reset.
3. With the care transponder, a triggered emergency call can be reset by proximity acknowledgment.

The housing of the transponder is designed to be particularly robust. The underside is translucent, which allows a direct view of the internal electronics and their labeling. The housing is closed by means of screws. These fittings are designed to be periodically opened and closed to allow a smooth replacement of the batteries. In addition, the housing is equipped with a flat gasket and complies with IP 67.

## Table data

Dimensions of board (WxHxD)	39mm x 20.5mm x 6mm
Dimensions housing (WxHxD)	47mm x 50mm x 10mm
Degree of protection	IP 67
Weight board	4g // 7g (with battery)
Total weight transponder	26g
Battery	CR2032, 3V
Transmission frequency	868 MHz
Activation frequency	125 kHz
Operating temperature	-20 ° C to + 45 ° C
Material Closure	Leatherstripe and metalclip
Mounting	clip closure

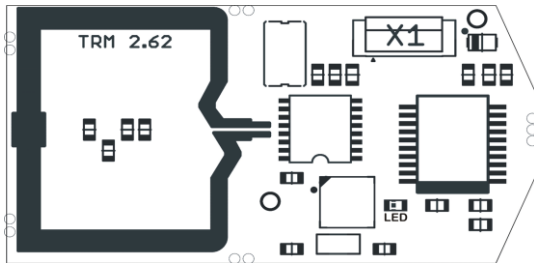


Abbildung 1 Transponder board

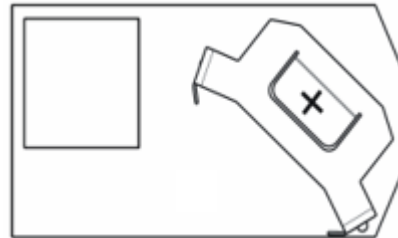


Abbildung 2 Transponder board rear view

Martin Elektrotechnik GmbH hereby declares that the care transponder 2.15 complies with the guidelines 2014/53 / EU, 2014/35 / EU, 2014/30 / EU. The full text of the EU Declaration of Conformity is available at the following website: [www.ticket.martin.care](http://www.ticket.martin.care)

The content has been compiled with the utmost care and is based on information that is considered reliable. A liability for the correctness can not be taken over.

### copyright

© 2021, Martin Elektrotechnik GmbH. All rights reserved.

This publication may not be reproduced in whole or in part, stored in a database system or in any form whatsoever - electronically, photocopied or magnetically recorded - without the prior written consent of Martin Elektrotechnik GmbH.

### Disclaimer

Our aim is to develop, produce and document our products and corresponding documents with the greatest possible care. However, Martin Elektrotechnik GmbH assumes no obligation or guarantee for the content of this documentation and, in particular, disclaims all liability for the merchantability or suitability for a particular purpose. In addition, Martin Elektrotechnik GmbH reserves the right to revise this publication and to make occasional changes without the obligation for Martin Elektrotechnik GmbH to notify any persons of such revisions. The latest version of this manual can be downloaded from the Internet at [www.schutzengel-systeme.de](http://www.schutzengel-systeme.de).

## Martin Elektrotechnik GmbH

Dr.-Gartenhof-Str. 4 | D-97769 Bad Brückenau | Tel. +49 (0) 9741-75 49 70 | [info@martin.care](mailto:info@martin.care) | [www.martin.care](http://www.martin.care)